



Scan QR Code



Download Schwebelndia App Today!



Download Schwebelndia App Today!

Schwebelndia.com

BUY ONLINE

Follow us on
f f
www.facebook.com/schwebelndia
www.twitter.com/schwebelndia

Dr. Willmar Schwabe India Pvt. Ltd.
A-36, Sector 60, Noida 201 304, U.P. (India)
Phone: 0120-4016500
E-mail: care@schwebelndia.com
Website: www.schwebelndia.com

SCHWABE India
Dr. Willmar Schwabe
From Nature. For Health.

"Always striving forward"
150 Years
Dr. Willmar Schwabe
Since 1866



1449/Oct-19

Schwabe's German Product Range
for *You* & your family
HOMOEOPATHY

Schwabe's Domestic Product Range

HOMOEOPATHY for *You* & your family



ISO 9001: 2015
CERTIFIED COMPANY

"Always striving forward"
150 Years
Dr. Willmar Schwabe
Since 1866



Download Schwebelndia App Today!



Scan QR Code



SCHWABE World's largest manufacturer of homoeopathic medicines, from GERMANY



From Nature.
For Health.

Schwabe's Domestic Range



From Nature.
For Health.

HOMOEOPATHY

Proven Science *or* Just "Sugar Pills"?

C O N T E N T S

Homoeopathy - Proven Science or just sugar pills?	2
About Homoeopathy & Schwabe	4
Schwabe & G.M.P.	5
Day to day problems (muscle/joint pain, acidity, indigestion, sinusitis, cold, flu, nose block, etc.)	7
Blood circulation in brain	9
Weight management	10
Natural Minerals (Biochemics, Bio-combinations)	11
Cough relief	13
Tonic for Liver & Digestion	14
Lifestyle problems (low immunity, lack of concentration, blood sugar, skin problems, etc.)	15
Day to day problems in children (cold, flu, cough, teething troubles, colic, etc.)	17
Spondylitis and Back Pain	19
Creams & gel for piles, psoriasis, joint pain, etc.	20
Body Care Range	22
Skin related problems (acne, pimples & dermatitis)	28
Health tonic and maintaining healthy heart	29
Maintaining normal blood sugar	30
Remedies specially for women	31
Hypothyroidism (thyroid problem)	32
Specific problems (gout & related stone formation, piles, etc.)	33
Schwabe India product Index (In brief)	34

Myth 1. Homoeopathy is an unproven science.

Fact: Homoeopathy is based on experimental pharmacological and clinical data. Over the years, homoeopathic medicines have been extensively studied for their efficacy in a variety of indications. Clinical studies have been conducted in India as well as other countries. In fact, the term 'Allopathy' was coined by the founder of homoeopathy whom the allopaths regard as the founder of experimental pharmacology. Homoeopathy is a proven science.

Myth 2. Homoeopathic medicines are only sugar pills which act more as placebos and have no medicinal value as such.

Fact: Homoeopathic medicines have been scientifically studied the world over and found to be effective in a wide range of diseases. Thus they are not placebos. The white sugar pills alone, as such do not have any medicinal value. But these act as vehicles or carriers for the medicines, which are alcohol based. Otherwise the medicine can be taken directly or dissolved in water.

Myth 3. Homoeopathy is slow acting and cannot be used in acute cases of fever, diarrhoea, cough, cold, etc.

Fact: Homoeopathy is fast acting in acute cases and can be effectively used in treating infections, fever, cold, etc. Unfortunately, people tend to go to a homoeopath only when the acute problem has become chronic. Naturally, these cases take longer to treat. Also, most people take recourse in homoeopathy in cases of arthritis, allergic asthma or skin conditions, etc., which take a longer time to treat with any other medicines.

Myth 4. Homoeopathy is a 'magic remedy' that can treat any disorder.

Fact: Homoeopathy, like any other field of medicine, has its limitations. For example, it cannot treat cases where surgery is unavoidable, some dental cases, etc.

Myth 5. Homoeopathic doctors are quacks who do not have formal training in the field of medicine.

Fact: Qualified doctors practice Homoeopathy, in most parts of the world. In India, there are around 200 medical colleges, which offer 5½ years degree course and around 40 colleges

HOMOEOPATHY

Proven Science *or* Just "Sugar Pills"?

Homoeopathy & Schwabe

offers 3 years post-graduate studies in Homoeopathy. At present, there are around 3,00,000 registered homoeopaths in the country.

Myth 6. One has to follow strict dietary restrictions while on homoeopathic treatment.

Fact: Some patients are asked to abstain from onions, garlic, coffee, tea, tobacco, alcohol, etc. as these substances interfere with the action of certain homoeopathic medicines. But then, restricting alcohol and tobacco is also safe and healthy.

Myth 7. Homoeopathy is only useful in chronic cases.

Fact: Very often it is - where everything else has failed! But the true reason for this perception is because people turn to homoeopathy so late when everything else has failed! After years of allopathic treatment often an illness becomes chronic. The treatment will now naturally take longer than in case of using homoeopathy right from the beginning.

Myth 8. Homoeopathy cannot be used in diabetic patients.

Fact: It can! The minute amount of sugar globuli (the little round pills)

taken daily does not matter. Sugar intake in the daily diet is significantly higher than that taken by a few globuli. In very severe cases, the dilution may be taken as drops in water or over lactose.

Myth 9. The homoeopath gives the same white pills for all types of illnesses. How can they be really effective?

Fact: Depending on the illness, homoeopaths medicate the sugar pills with different medicines. The sugar pills serve only as a vehicle for transfer of the medicine. The selected medicine, out of a range of more than 1100 different dilutions, is targeted to the individual's problems.

Myth 10. Are there really no side effects of homoeopathic medicines?

Fact: Generally there are no side effects of homoeopathic medicine if prescribed in potencies of 30CH and above. However, some tinctures and triturates in very low potencies like 1x, 2x have some side effect of minor nature.

There are many more myths that people carry in their minds. We have tried to dispel some of the more common ones.



Hahnemann (1755-1843)
Founder of Homoeopathy

The principle that "like can cure like" dates back to Vedas and Hippocrates. Hippocrates is known as father of medicines.

A German physician Dr. C.F.S Hahnemann (1755-1843) thought of a new system of medicine - **Homoeopathy**.

Homoeopathy, literally means "treatment by the same". It is based on the key principle that a drug taken in small amounts will cure the same symptoms it causes in large amounts. Hahnemann found that the symptoms that occurred when a drug substance is taken by a person, were removed by the minute very low doses of the same drug.

The combination of symptoms made up a "drug picture" for each substance being tested. New system of medicine, in which a drug and a disease that produce similar symptoms cancel each other in some way thereby restoring the patient to health. He described this phenomenon as "similia similar" or "like can cure like", which is

the first and foremost rule of homoeopathy.

The profession & industry largely depended for the raw materials on B & T (USA), Dr. Willmar Schwabe,



Dr. Willmar Schwabe

Germany and a few others. Dr. Willmar Schwabe products including its well-known Cineraria Maritima Eye Drops, Bio-chemic medicines like Calcarea phosphorica were marketed since the end of 19th century. Over hundred years of trust and increasing demand helped Schwabe setting up a modern GMP compliant factory in India in 1997.

Today **Dr. Willmar Schwabe India Pvt. Ltd.** is the only multi-national in the field of homoeopathic manufacturing in India. It brought to India their 130 years of experience in manufacturing of homoeopathic medicines.

Schwabe's emphasis on the Quality and Efficacy of its products has made it one of the leading manufacturers of natural medicines in the world.

Dr. Willmar Schwabe India Pvt. Ltd. follows the stringent WHO & Govt. of India standards of G.M.P. from inception (1997). Our quality control standards are stricter than the Government guidelines and extend all the way from the raw material procurement to the packing stage. The medicines produced at the plant are at par with world's best quality. Each product is documented and analyzed to ensure total quality. Medicines at the Schwabe factory are produced in a clean environment, observing the highest degree of hygiene and sanitation, as per GMP guidelines.

What is G.M.P.?

In July 1969, WHO (World Health Organization) at its 22nd Health Assembly laid the importance of G.M.P. (Good Manufacturing Practices) which has been well accepted worldwide and became a common practice in the pharmaceutical industry.

G.M.P. offers guidelines & standards for manufacturing process & premises. It details standards on location, surrounding, building, plant & equipment, quality control, raw material, procedures, etc. to ensure that the consumer gets high quality products as per the prescribed standards laid by the Govt.

Why G.M.P.?

Every consumer is entitled to receive medicines of the Best Quality, thus value for his/her money. The liability of quality lies with the manufacturer, who is bound to keep documented proof for the same.

G.M.P. in Homoeopathy

In October 2006 the Government of India notified G.M.P. rules for all Homoeopathic manufacturers, Schwabe was immediately certified as G.M.P. compliant unit.

Any contamination not only reduces the efficacy of the product but can even be

detrimental to its action since in Homoeopathy the therapeutic doses are very minute. Extreme cleanliness is an absolute necessity during Homoeopathy manufacturing.

Drug potentization is done using the Hahnemannian method, which was introduced by Dr. Hahnemann himself and followed by Dr. Schwabe from the beginning. The whole process is under the responsibility of qualified experts. A quality assurance laboratory checks the quality of all the raw materials, packing materials and the finished products. Cutting edge technology is used to assure quality control. Schwabe India maintains a team of highly qualified technical staff including experts in homoeopathy to constantly guide and advise on the various aspects of homoeopathic manufacture and quality control.

Sealed Packs

Sale of loose medicines or re-packing of homoeopathic medicines by the dispensers harm the quality of homoeopathic medicines. As per GMP the homoeopathic potentized preparations are to be manufactured under pollution-free atmosphere which should also be free from suspended particles and bacteria. Such a situation does not exist on the roadside dispensing counters.

Buying a sealed pack medicine the consumer is assured that he is getting a product of a quality manufactured by the manufacturer at a price which is mentioned on its product. He is also aware of the name of the drug which he is taking which legally he is entitled to know. If the physician and the consumer are conscious about the quality then they should go for small sealed bottles.

Consumer Protection Aspects

What should consumer do?

- Consumer has the right to get high quality medicines
- Consumer has the right to get value for the money spent
- Consumer should insist on the medicines from G.M.P. Certified manufacturers only



Schwabe's Alpha Range for day to day problems

Schwabe's Domestic Range



Alpha™ - MP

For relief from muscular pain of various origins

- Relieves muscular pain, cramps and rheumatic pains
- Reduces general uneasiness, weariness and weakness



Alpha™ - HA

Gives Relief in various types of Headaches associated with:

- Migraine
- Excessive Intake of Alcohol
- Fever
- Cold & Flu
- Stress



Alpha™ - WD

A safe immuno stimulator

- Enhances the body's resistance power (immunity)
- Takes care of illness after exposure to cold
- Minimise the proneness to diseases



Alpha™ - TS

A drug that lowers tension and stress without side effects

- Contains internationally acknowledged Passiflora
- Normalises physiological functions and reduces anxiety
- Controls depression, & has calming effect

Alpha™ - Acid

For prompt and effective relief from hyperacidity & flatulence

- Provides relief from acidity and heartburn
- Useful in gastric disturbances, burning, epigastric pain and dyspepsia

Alpha™ - DP

For prompt and effective relief from digestive problems

- Controls belching, flatulence and abdominal discomfort
- Stops nausea/vomiting, dyspepsia and exhaustion
- Useful in painful and watery diarrhoea and associated weakness

Alpha™ - Tons

For prompt and effective relief from acute & chronic tonsillitis

- Provides prompt relief from inflammation of the tonsils and pain
- Relieves shooting pain in the throat and difficulty in swallowing
- Relieves stiffness of muscles of throat and neck

Alpha™ - CF

The complete formula for Cold & Flu

Covers complaints of:

- Upper respiratory tract infection
- Common cold & headache due to cold
- Cold, coryza & where profuse watery discharge

Alpha™ - NC

For the complete management of Nasal Congestion

Alpha™ - SH

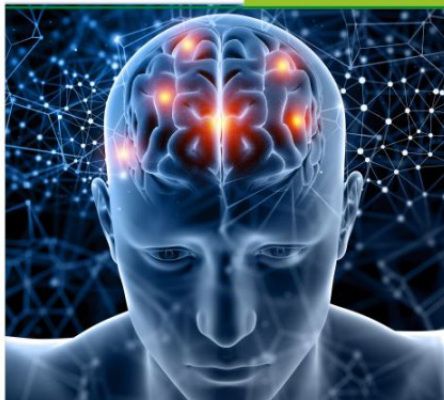
The triple action therapy for total relief from sinusitis

Alpha™ - CC

For the Chronic Cough

Alpha™ - MS

Total relief in motion sickness



BRAIN

The central
information-processing
organ of the body

Ginkgo Biloba 1x

MT Tablets

Ginkgo is a recognized medicine for insufficient cerebral circulation, peripheral vascular problems and for neuro-sensorial affections of circulatory origin relating to ears, nose, throat and eyes.

Useful in

- Insufficient cerebral circulation and the symptoms arising thereof.
- Buzzing in the ears (Tinnitus).
- Vertigo & incoordinated movement.
- Trembling of hands.

Dosage: Unless otherwise prescribed by the physician, 1-2 tablets thrice daily. In acute conditions two tablets every hour for a day. If complaints are not relieved, consult a specialist.



NO SIDE EFFECTS



Maintain &
manage
healthy weight



Prevent diseases like high BP, high sugar, cholesterol, etc. by maintaining optimum weight.

Schwabe's Phytolacca Berry Tablets + balanced diet and general exercise = Managing weight is easier than you think.

Available at all leading homoeopathic & allopathic chemists

Effective in both
Women &
Men





From Nature.
For Health.

Schwabe's Domestic Range Schwabe's Biochemics

Biochemics are made from salts naturally found in the body & an imbalance of these salts results in diseases. Biochemic tablets are used to correct these imbalances and cure the diseases.



Calcarea Phosphorica

Bone problems.
Teething complaints in infants



Ferrum Phosphoricum

Anaemia and acute fever



Kali Phosphoricum

Weakness of muscles
and nerves

Magnesium Phosphoricum

Spasms, cramps, headaches

Natrum Phosphoricum

Indigestion and hyperacidity

Silicea

Brittle nails, acne & boils

Natrum Muriaticum

Cold with watery discharge

Natrum Sulphuricum

Cough & dyspnoea in wet weather

Calcarea Sulphurica

Eczema and skin eruptions

Calcarea Fluorica

Varicose veins & piles

Kali Sulphuricum

Itchy & scaly skin

Kali Muriaticum

Stuffy nose with white thick phlegm

Also Available

550 gm.
Jumbo Pack



Five Phos

General Tonic for nerves



From Nature.
For Health.

Schwabe's Domestic Range Schwabe's Bio-combinations



Joint Pains



Skin Diseases



Teething Troubles

Also Available

550 gm.
Jumbo Pack



Anaemia	BC 01
Asthma	BC 02
Colic	BC 03
Constipation	BC 04
Coryza	BC 05
Cough, Cold & Catarrh	BC 06
Weakness due to blood sugar	BC 07
Diarrhoea	BC 08
Dysentery	BC 09
Enlarged Tonsils	BC 10
Fever	BC 11
Headache	BC 12
Leucorrhoea	BC 13
Measles	BC 14
Menstruation Troubles*	BC 15
Nervous Exhaustion	BC 16
Piles	BC 17
Pyorrhoea / Gum infection	BC 18

Scrofula	BC 22
Toothache	BC 23
Tonic: Nerves & Brain	BC 24
Acidity, Flatulence & Indigestion	BC 25
Easy Parturition	BC 26
Lack of Vitality	BC 27
General Tonic for Nerves	BC 28



From Nature.
For Health.

Schwabe's Domestic Range Keep Your Cough Quiet



No drowsiness
No addiction



Alpha-Coff™
Cough Syrup



Tussistin®
Cough Syrup
for children



**Tussistin®
Plus+**
Cough Syrup with Ginger

Relieves:

Dry Cough

Irritating
Cough

Spasmodic
Cough

Productive
Cough

Buy Online: www.schwabeindia.com

13

Please consult your Physician.



From Nature.
For Health.

Schwabe's Domestic Range Tonic for Liver & Digestion

Alpha-Liv™

Homoeopathic Liver Tonic

For slow liver functions, fatty liver,
toxic (alcohol) liver damage & jaundice

For prompt response in
liver disorders



SUGAR
FREE

Dizester™

DIGESTIVE TONIC

Power packed formula

- Improves digestion
- Useful in dyspepsia, flatulence,
bloating & acidity



Available in: 100ml, 200ml & 500ml

Buy Online: www.schwabeindia.com

14

Please consult your Physician.



From Nature.
For Health.

1X Tablets for lifestyle problems like

Low immunity, addiction, lack of concentration
& skin problems



From Nature.
For Health.

Schwabe's Domestic Range



Ginseng 1X MT Tablets

Stress reliever
Adaptogenic tonic



Ginkgo biloba 1X MT Tablets

Cerebral circulation



Fucus vesiculosus 1X MT Tablets

Obesity due to
thyroid disorders



Sabal serrulata 1X MT Tablets

Urinary trouble
in elderly



Syzygium jambolanum 1X MT Tablets

Effectively helps to maintain normal
blood sugar level*



Bacopa monnieri 1X (Brahmi) MT Tablets

Brain tonic



Baptisia tinctoria 1X MT Tablets

Typhoid fever and
septic conditions



Echinacea angustifolia 1X MT Tablets

Immune booster



Holarrhena antidysenterica 1X MT Tablets

Diarrhoea & dysentery



Hypericum perforatum 1X MT Tablets

Nerve healer



Glycyrrhiza glabra 1X MT Tablets

Irritating cough & catarrh



Azadirachta indica 1X MT Tablets

Detoxifier



Rauwolfia serpentina 1X MT Tablets

Effectively helps to maintain
normal blood pressure*



Crataegus oxyacantha 1X MT Tablets

High cholesterol and
blood pressure



Daphne indica 1X MT Tablets

Tobacco de-addiction



Quercus robur 1X MT Tablets

Alcohol de-addiction



From Nature.
For Health.

Child Care Range

For common day-to-day ailments in children



Munostim™

- Activates defence mechanism and stimulates immune system, prevents proneness to repeated attacks of illness
- Increases resistance against diseases



Enukind™

- Clinically established therapy for bedwetting in children caused due to psychosomatic factors, weakness and UTI infections
- Effectively controls frequency of urination and checks nocturnal enuresis



Nisikind™

- Effectively controls common respiratory problems in children and is indicated for cold associated with cough, shortness of breath
- Controls bodyache, headache & associated mild fever



Tussikind™

For prompt and effective relief from cough and congestion in children



Kindival™

Irritability and sleeping disorders



Colikind™

Colic pain



From Nature.
For Health.

Schwabe's Domestic Range



Rinikind™

- Effectively relieves irritating symptoms such as sneezing, nasal discharge and watery eyes in children
- Controls allergic rhinitis, inflammation of the nasal passage and checks sneezing



Chamodent™

- Ensures trouble-free teething
- Lowers throbbing pain of teeth and gums
- Takes care of associated diarrhoea, colic & flatulence



Kindigest™

- For prompt and effective relief from digestive problems in children, restores normal appetite
- Effectively relieves burning pain in the stomach with nausea and vomiting



Calciokind™

To improve calcium assimilation and resistance



Luffakind™

Pollinosis and prevention & treatment of allergic rhinitis



Anekind™

Anaemia

Schwabe's Domestic Range Spondylitis and Back Pain

Stay Pain Free and Active...

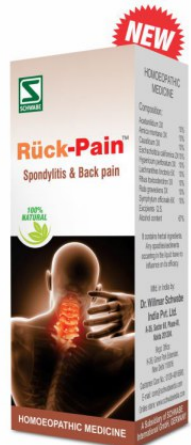


Rück-Pain™

Drops

For Spondylitis & Back Pain

- Unique 100% natural & safe Homeopathic combination for Various Joint & Muscle related pain
- Eases nerve pain due to injury
- Muscular tonic activity, relieves pain & stiffness in back, neck, wrists, lumbar vertebrae & pain due to Sciatica
- Comforts tearing pains in tendons & ligaments



Provides faster relief, beyond belief

Creams & Gel for problems like piles, psoriasis, joint pain, burn, infection, warts, eczema, acne/pimples

Topi® Aesculus hippocastanum CREAM

FOR EXTERNAL & INTERNAL PILES

Effectively treats
external and internal piles



Topi® MP GEL

FOR JOINTS & SCIATIC PAIN

For arthritis, sciatica and
spondylosis



Topi® Cardiospermum helicecabum CREAM

FOR PSORIASIS

Symptoms of psoriasis and eczema



Topi® Azadirachta indica CREAM

SKIN DISEASES & HEALTHY SKIN

Skin diseases like boils, ulcers, itching, eczema,
scabies, burning, pigmentation abnormalities



Topi® Berberis aquifolium CREAM

FOR ACNE & DERMATITIS

For acne, pimples, & rough skin





From Nature.
For Health.

Schwabe's Domestic Range

Topi® Graphites CREAM

FOR DRY ECZEMA

For dry eczema & dermatitis



Topi® Thuja occidentalis CREAM

FOR WARTS

For warts, condylomata & excrescences



Topi® Cantharis CREAM

FOR BURNS

For first degree burns, sunburns & associated complaints like pain & discolouration



Topi® Heal CREAM

ANTISEPTIC HEALING CREAM

For cuts and wound healing



Topi® Sulphur CREAM

ANTIMICROBIAL CREAM

For seborrheic conditions, scabies & mild fungal infections



Topi® Arnica montana CREAM

FOR MUSCULAR ACHES & PAINS

For traumatic injuries like bruises, sprains, muscular pain



Buy Online: www.schwabeindia.com

21

Please consult your Physician.



From Nature.
For Health.

Body Care Range



International Quality Body Care Range

Registered Trademark of
Nature's Way Products, Inc. USA

Do not wait, Take care of your hair now...



Zauberöl®

PREMIUM HAIR OIL

Reactivates the damaged hair follicles
& Stimulates hair growth*

Zauberöl® – The Hair Therapy

Zauberöl® hair therapy consists of two products developed by medical scientists to suit the different types of alopecia.

The entire process of making the oil is done by using d-E Tech™ technology to ensure that there is no loss of medicinal ingredients during the process.

Zauberöl® Weekdays and Zauberöl® Weekend have right combination, and base ingredients are known for their medicinal values for centuries.

➤ **Scientifically Proven** ➤ **Dermatologically Tested**



#Data in file

Buy Online: www.schwabeindia.com

22

Please consult your Physician.

Cleansing Neem Face wash

- Cleanses the skin and prevents pimples.
- Washes away excess oil which attracts dirt & bacteria

Enriched with:

- ☞ Neem
- ☞ Calendula
- ☞ Echinacea
- ☞ Berberis aquifolium



Available in 60ml & 15 ml.

7öl

Nourishing Scalp & Hair Oil

Enriched with Arnica, Brahmi & Bhringraj

- Nourishing and increasing the blood circulation in the scalp area & strengthening each hair strand
- Effective power of 7 oils:
Almond oil, Argan oil,
Olive oil, Jojoba oil,
Walnut oil, Amla oil &
Coconut Oil



Available in 200 ml.

SUNSCREEN EXPERT

SPF 30

- UVA + UVB High protection
- Prevents skin darkening, collagen fibers and skin DNA protection, which help to prevent wrinkles & pre mature aging

Enriched with:

- ☞ Aloe vera
- ☞ Calendula
- ☞ Berberis aquifolium



Available in 100 g.

Cool Talc

Daily freshness with Neem, Tulsi, Mentha, Calendula, Echinacea & Berberis

- Refresh and relax the body from unbearable heat and excessive sweating.
- All day long fresh sensation



Available in 100 g.

Calendula & Aloe Vera Multi Purpose Cream

The goodness of Calendula & Aloe Vera

For supple skin & in common skin problems

Multipurpose uses:

- Dryness of skin
- Face & body massage
- Skin blemishes & dark spots
- Nappy rashes

Available in 100 & 300g.



Active Ingredients:

- ☞ Calendula ☞ Aloe vera

Dental Care

Complete Oral Care Gel

For naturally healthier gums and teeth

- Fights Cavity
- 100% Vegetarian

• Refreshing Fresh Breath

Available in 100 g.



Enriched with: ☞ Neem ☞ Calendula ☞ Chamomile ☞ Foeniculum vulgare



From Nature.
For Health.

Body Care Range



From Nature.
For Health.

Schwabe's Domestic Range



Paraben Free

Arnica Shampoo

The richness of Arnica, Jaborandi, Lavendula & Salvia

- Arnica improves hair growth
 - Salvia, Jaborandi prevent hair fall & premature graying
 - Exerts a tonic influence on the scalp
- Enriched with:
- ⌘ Arnica
 - ⌘ Jaborandi
 - ⌘ Salvia
 - ⌘ Lavendula

Available in 250ml & 150 ml.

Hair Growth Oil

The richness of Arnica Montana, Jaborandi, Sabal serrulata & Olive oil

- Arnica, Jaborandi improve hair growth & prevents premature graying
 - Non sticky & makes hair soft
 - Olive oil repairs damaged hair due to pollution/heat/dyes as it contains natural antioxidant
- Enriched with:
- ⌘ Arnica montana
 - ⌘ Jaborandi
 - ⌘ Sabal serrulata
 - ⌘ Olive oil

Available in 200 ml.



Paraben Free

Buy Online: www.schwabeindia.com

25



Paraben Free

Anti-Dandruff Shampoo

The power of Lavendula, Saponaria & Urtica dioica

- Powerful formula that helps to treat Dandruff
 - Urtica dioica, Saponaria control itching and flaking on regular use
 - Promotes healthy scalp & healthy hair
- Enriched with:
- ⌘ Acid salicylicum
 - ⌘ Urtica dioica
 - ⌘ Acid carbolicum
 - ⌘ Lavendula
 - ⌘ Saponaria

Available in 150 ml.

Anti-Dandruff Oil

The power of Neem, Lavendula, Cardiospermum & Cochlearia

- Powerful formula, helps to treat Dandruff
 - Neem, Cardiospermum controls itching & flaking on regular use
- Enriched with:
- ⌘ Cochlearia
 - ⌘ Cardiospermum
 - ⌘ Azadirachta indica
 - ⌘ Lavendula

Available in 150 ml.



Paraben Free

Buy Online: www.schwabeindia.com

26



From Nature.
For Health.

Schwabe's Domestic Range



From Nature.
For Health.

Schwabe's Domestic Range Skin related problems



Skin Care Bathing Bar

The power of Calendula for healthy & nourished skin



Refreshing Cool Bathing Bar

The goodness of Lavendula, Tulsi, Mentha & Neem

Relaxing bath by soothing skin & giving cooling effect



Akne-Sor™ Soap

The power of Berberis, Cardiospermum, Echinacea & Aloe vera

For acne & psoriasis



Glow & Fairness Soap

The goodness of Aloe vera, Calendula, Pulsatilla, Berberis A., Haldi & Chandan

For a natural glowing skin

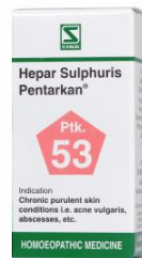
Available in 75 g.



Acne & Pimples



Topi® Berberis aquifolium CREAM FOR ACNE & DERMATITIS



Hepar Sulphuris Pentarkan® Acne & Pimples





From Nature.
For Health.

Schwabe's Domestic Range

Health Tonic & Maintaining healthy heart*



From Nature.
For Health.

Schwabe's Domestic Range

Maintaining normal blood sugar

Schwabe's Alfalfa Tonic is a rejuvenating homoeopathic preparation that reduces fatigue as well as stress and improves digestion effectively.

With
Natural Vitamins
& Useful Minerals



Schwabe's Alfalfa Tonic®

For Family, For Children & For Diabetic



For the management
of symptoms & weakness
due to
**high blood
sugar**



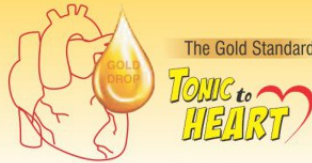
Syzygium jambolanum

1X Tablets

Effectively manages
blood sugar related problems*



Schwabe's Essentia aurea Gold Drops



- ♥ Acts as a heart tonic
- ♥ Normalises the pulse and maintains normal blood pressure
- ♥ Can be safely used along with other medicines prescribed by specialists
- ♥ Gold drops are being recommended by doctors since over 100 years



Schwabe's Alfalfa Tonic®

THE REAL HEALTH TONIC

Sugar Free

Specially formulated for Diabetics

+ Natural Vitamins &
Useful Minerals



Schwabe's Domestic Range Remedies specially for women



Ferrum Phosphoricum
Biochemic Tablets
Anaemia



Hertone™
Uterotonic

Safe for long term use
Free from side effects



**Lilium tigr.
Pentarkan™**
Liquid



**Agnus Castus
Pentarkan™**
Tablets



**Magnesium
Phosphoricum
Pentarkan™**
Tablets

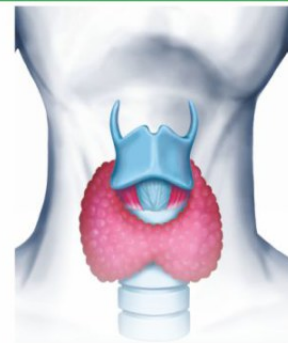


Klimaktolan™
Tablets

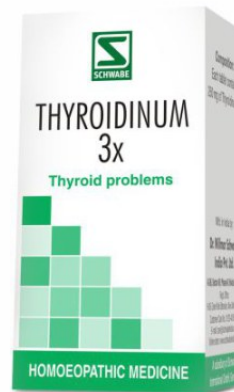
Schwabe's Domestic Range For worries related to Hypothyroidism

**Untreated Hypothyroidism
may cause a number of
health problems such as:**

- ◆ Unexplained weight gain
- ◆ Muscular aches, tenderness and stiffness
- ◆ Heart disease
- ◆ Tiredness
- ◆ A puffy face and hoarse voice
- ◆ Dry skin and alopecia
- ◆ Depression



**Schwabe's
THYROIDINUM 3x**
For effective treatment of
thyroid dysfunctions (Hypothyroidism)



Schwabe's Domestic Range For very specific problems



Grindelia Pentarkan®

For allergic bronchitis &
related breathing troubles



Sabal Pentarkan®

Urinary flow disturbances
in elderly & UTI



Berberis Pentarkan®

Gout related
Stone formation



Aesculus Pentarkan®

Piles and
Varicose Veins



Viscum Pentarkan®

Maintains
blood pressure
at normal level*

Schwabe's Domestic Range of products for different medical problems

Product	Indication	Product	Indication
ALPHA RANGE		PENTARKAN RANGE	
Alpha™. Coff	Cough syrup	Aconitum Pentarkan™	Common Cold/Acute otitis
Alpha™. HA	Headache	Aesculus Pentarkan™	Piles & Varicose Veins
Alpha™. RC	Respiratory Congestion	Agnus Castus Pentarkan™	Irregular Menstruation*
Alpha™. NC	Nasal Congestion	Berberis Pentarkan™	Gout & Kidney Stone *
Alpha™. CF	Cold & Flu	Cardus Marianus Pentarkan™	Chronic Liver Diseases
Alpha™. SH	Sinus Headache	Crataegus Pentarkan™	Senile Heart/Cardiac Weakness*
Alpha™. Acid	Hyperacidity	Graphites Pentarkan™	Dermatitis
Alpha™. DP	Digestive Problems	Grindelia Pentarkan™	Allergic bronchitis
Alpha™. MS	Motion Sickness	Hepar Sulphuris Pentarkan™	Acne & Pimples
Alpha™. CC	Chronic Cough	Lilium tigr. Pentarkan™	Leucorrhoea
Alpha™. WD	Weak Defence	Magnesium Phosphoricum Pentarkan™	Painful Menstruation *
Alpha™. MP	Muscular Pain	Millefolium Pentarkan™	Excessive Uterine Bleeding *
Alpha™. TS	Tension & Stress	Sabal Pentarkan™	Prostate Enlargement/ Urinary Tract Infections *
Alpha™. Tons	Tonsillitis	Senega Pentarkan™	Chronic Bronchitis
Alpha™. Liv	Liver Tonic	Silicea Pentarkan™	Stretch Marks
		Viscum Pentarkan™	High Blood Pressure *
		KINDI RANGE	
		Anekind™	Anaemia
		Calciockind™	Calcium Assimilation
		Chamodent™	Teething Problems
		Colkind™	Colic Pain
		Enukind™	Bedwetting
		Kindigest™	Indigestion
		Kindival™	Sleeping Disorder/Irritability
		Luffakind™	Allergic Rhinitis
		Munostim™	Immune System Activator
		Niakind™	Cold & Flu
		Rnikind™	Rhinitis
		Tussikind™	Cough
		1X TABLETS RANGE	
		Azadirachta indica 1X	Skin Detoxifier (Blood purifier)
		Bacopa monnieri 1X	Brain Tonic
		Baptisia tinctoria 1X	Typhoid fever
		Crataegus oxyacantha 1X	Cholesterol & High B.P.
		Daphne indica 1X	Tobacco de-addiction
		Echinacea angustifolia 1X	Immune Booster
		Fucus vesiculosus 1X	Weight management
		Ginkgo biloba 1X	Cerebral circulation
		Ginseng 1X	Stress Buster
		Glycyrrhiza glabra 1X	Irritating Cough
		Hypericum perforatum 1X	Nerve Healer
		Holarhena antidiysenterica 1X	Diarrhoea & dysentery
		Quercus robur 1X	Alcohol de-addiction
		Rauwolfia serpentina 1X	High blood pressure *
		Sabal serrulata 1X	Urinary troubles in elderly
		Syzgium jambolanum 1X	Blood sugar *
		OTHER SPECIALTIES RANGE	
		Schwabe's Alfalfa Tonic®	General Health Tonic
		Alfalfa Tonic® (Diabetics)	Sugar Free General Health Tonic
		Alfalfa Tonic® (Paediatrics)	Children's Health Tonic
		Phytolacca Berry Tablets	Weight management *
		Essentia aurea (Gold Drops)	Cardio Tonic *
		Damiaplan®	For Male *
		Dizester	Digestive Tonic
		Essentia Infantis	Children's Growth Tonic
		Hertone	Uterotonic
		Klimaktolan™	Menopause *
		Angioton®	Low Blood Pressure *
		Rück-Pain	Spondylitis and back pain
		Thyroiodinum 3x	Hypothyroidism
		Tussistirn® / Tussistirn Plus	Cough Syrup

Over the years, acquisitions, joint ventures and the founding of new companies have made Schwabe a large conglomerate with subsidiaries and associated companies both at home and abroad.



- Subsidiaries & joint Ventures
- Licensees
- ▲ Plantations
- ◆ Extractions Facilities

Measured by its national turnover, the Schwabe Group today is one of the largest medicine producers in Germany. Its international reach spans five continents, with international share of 75% of total turnover. The group employs approximately 3600 people worldwide.

SCHWABE'S STATE-OF-THE-ART FACILITIES ACROSS THE GLOBE



DHU, Germany



Schwabe, India



Locker, Italy



Omida, Switzerland



Spitzner, Germany



Schwabe, UK



Nature's Way, USA



Austroplant, Austria

**Trusted for more than
100 years**

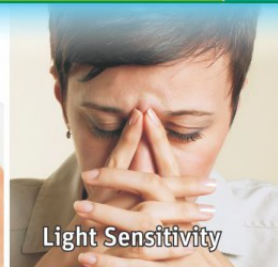
in **Cataract** (মোতিয়াবিন্দ চোখের ছনিরোগ
কণ্ঠপুত্রা তিমীৱো মেজীআধিৎ) &
Corneal opacities By Doctors



Pain & itching



A feeling of a foreign body
or sand in the eye



Light Sensitivity

Any of these could be a symptom of

DRY EYES

It may be due to Computer Vision Syndrome, excessive TV watching or excessive use of mobile phones



Cineraria Maritima Schwabe Eye Drops



► Physicians prescribe only 'Cineraria Eye drops containing succus', for Cataract

THE ORIGINAL & STRONGER CMS



Senecio Bicolor D2

SCHWABE CINERARIA MARITIMA

Eye Drops

WITHOUT ALCOHOL



Triple Action

- **Moisturises**
- **Relieves irritation**
- **Soothes eye strain**

Mild & Lighter

Caution: This is not a substitute for Schwabe's succus based CMS Eye Drops which is prescribed for serious eye problems like Corneal opacities & Cataract.

Aesculus Pentarkan® Ptk. 3

Varicose veins & both bleeding and itchy piles.



Gnaphalium Pentarkan® Ptk. 49

Symptoms of sciatica such as low back pain with numbness, tingling along the leg, etc.



Berberis Pentarkan® Ptk. 15

Gout and complaints caused by high uric acid levels & related stone formation.



Rhus Toxicodendron Pentarkan® Ptk. 73

For musculoskeletal diseases, such as muscular pains.



Carbo vegetabilis Pentarkan® Ptk. 22

Flatulence due to gas accumulation in the intestine.



Sabal Pentarkan® Ptk. 75

Inflammation of the bladder & disturbed urinary flow in elderly. Also helpful in acute urinary tract infections like cystitis in both men & women.



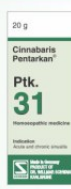
Carduus marianus Pentarkan® Ptk. 23

Chronic liver disease



Cinnabaris Pentarkan® Ptk. 31

Acute and chronic sinusitis.



Urtica Pentarkan® Ptk. 86

Itchy skin rashes such as urticaria & other symptoms like burning, sensitivity to touch, nettle rashes are also covered.





From Nature.
For Health.

Schwabe's German Range



From Nature.
For Health.

Schwabe's German Range

Schwabe's **Calcarea phosphorica 6X**

Biochemic Tablets
For healthy bones and
teething problems

Dosage: Children 2 tablets, at a time,
four times a day at interval of three hours.



Tonsiotren

For acute and chronic inflammation
of the tonsils and of the accessory
sinuses of the nose

Dosage: 1 to 2 tablets three times a day,
to be dissolved in the mouth.
In acute cases every other hour.



Biofungin[®]

For **predictable**
results in **anaemia**

Dosage : Adults - one tablespoonful,
children - one teaspoonful half an hour
before meals three times a day



Tastes good

Alfalfa Tonic[®]

A general tonic, recommended for fatigue,
loss of appetite, nervousness as a result of
anxiety, worry and overwork.
Especially good for convalescence.

Dosage:
Adults one tablespoonful,
children one teaspoonful
one hour before meals,
three times a day.



Gastrobin®

For hyperacidity, heartburn,
inflammatory gastric complaints

Dosage:

10 to 15 drops, to be taken 3 times per day before meals.
A suitable diet is recommended to complement this therapy.



Essentia aurea

Gold Drops

For chronic myasthenia of the heart,
dysfunctions of the circulation
& cardiac dyspnoea

Dosage:

10 to 20 drops three or four times a day
in some water.



Bryorheum®

Indicated for redness, stiffness and/or
swelling of the joints & pain in muscles

Dosage:

10 drops, to be taken 3-4 times per day,
before meals.



Damiaplat®

For nervous exhaustion, neurasthenia
in male & female

Dosage:

10 drops, to be taken
2 to 4 times per day.



Enuroplant®

To relieve the symptoms of cystitis, related pain, adult bed wetting and frequent urination

Dosage: Adults 10-20 drops three times a day.
Children and infants: 5 to 10 drops three times a day



Phytolacca Berry Tablets

Approved in practice, this homoeopathic preparation is considered a great help in individual weight management*

Dosage: Unless otherwise prescribed, 2 to 3 tablets three times a day, before meals. Adequate regimen should be observed.



Schwabe's German Mother Tinctures

Exclusive range of more than 100 high quality German MTs



Schwabe's German Dilutions

Standardised for best quality



Schwabe's German Biochemic Tablets

For common day-to-day problems



Schwabe's German Bioplasgen (Bio-combinations)

For common day-to-day problems like cold, cough, fever, etc.



Low Attenuation Trituration Tablets (LATT)

Effective for both day-to-day and complex problems

